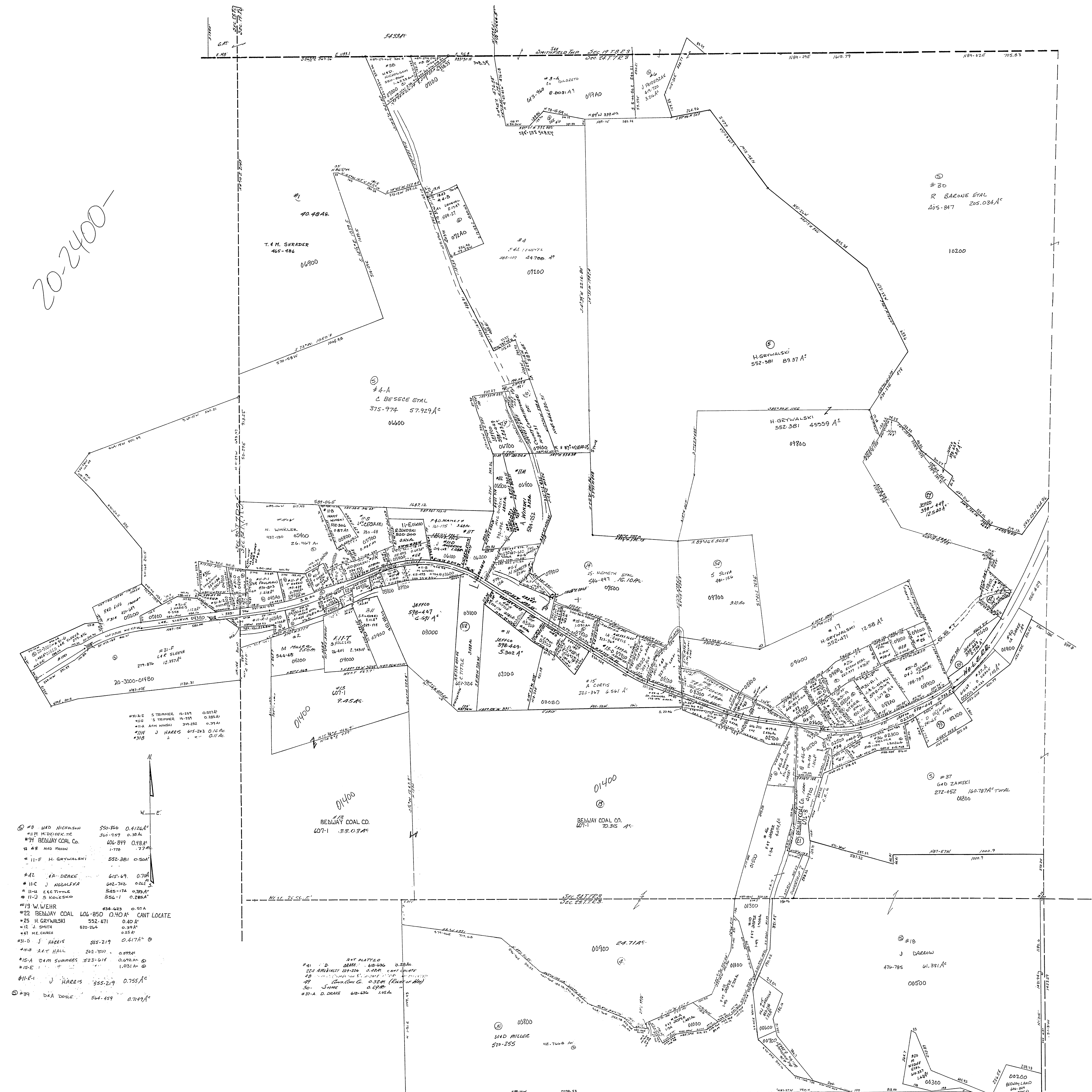


20-2400-



- #31-A Z S. THOMAS 11-119 0.537A
- #31-B S. THOMAS 11-119 0.385A
- #31-C A.M. WINSKI 344-252 0.39A
- #31-D J. HARRIS 615-283 0.14A
- #31-E " " " 0.14A
- #31-F " " " 0.14A
- #31-G " " " 0.14A
- #31-H " " " 0.14A
- #31-I " " " 0.14A
- #31-J " " " 0.14A
- #31-K " " " 0.14A
- #31-L " " " 0.14A
- #31-M " " " 0.14A
- #31-N " " " 0.14A
- #31-O " " " 0.14A
- #31-P " " " 0.14A
- #31-Q " " " 0.14A
- #31-R " " " 0.14A
- #31-S " " " 0.14A
- #31-T " " " 0.14A
- #31-U " " " 0.14A
- #31-V " " " 0.14A
- #31-W " " " 0.14A
- #31-X " " " 0.14A
- #31-Y " " " 0.14A
- #31-Z " " " 0.14A
- #32 BENJAY COAL 106-850 0.40A CANT LOCATE
- #33 H. GRYWALSKI 552-471 0.40A
- #34 J. SMITH 520-264 0.39A
- #35 K. GORDON 0.32A
- #36 J. HARRIS 555-219 0.417A
- #37 A.C. HALL 242-501 0.897A
- #38 A.M. SUMMERS 523-616 0.672A
- #39 E. 1.031A
- #40 J. HARRIS 555-219 0.755A
- #41 D.A. DOYLE 564-459 0.7149A
- #42 W. DEANE 615-69 0.70A
- #43 J. NEGOLFKA 602-762 0.262
- #44 E.C. TITTE 545-174 0.789A
- #45 S. KOLESKO 556-1 0.285A
- #46 W. WEHR 434-623 0.91A
- #47 BENJAY COAL 107-1 3.5.03A
- #48 H. GRYWALSKI 552-381 0.50A
- #49 M. DEANE 615-69 0.70A
- #50 J. NEGOLFKA 602-762 0.262
- #51 E.C. TITTE 545-174 0.789A
- #52 S. KOLESKO 556-1 0.285A
- #53 W. WEHR 434-623 0.91A
- #54 BENJAY COAL 107-1 3.5.03A
- #55 H. GRYWALSKI 552-381 0.50A
- #56 M. DEANE 615-69 0.70A
- #57 J. NEGOLFKA 602-762 0.262
- #58 E.C. TITTE 545-174 0.789A
- #59 S. KOLESKO 556-1 0.285A
- #60 W. WEHR 434-623 0.91A
- #61 BENJAY COAL 107-1 3.5.03A
- #62 H. GRYWALSKI 552-381 0.50A
- #63 M. DEANE 615-69 0.70A
- #64 J. NEGOLFKA 602-762 0.262
- #65 E.C. TITTE 545-174 0.789A
- #66 S. KOLESKO 556-1 0.285A
- #67 W. WEHR 434-623 0.91A
- #68 BENJAY COAL 107-1 3.5.03A
- #69 H. GRYWALSKI 552-381 0.50A
- #70 M. DEANE 615-69 0.70A
- #71 J. NEGOLFKA 602-762 0.262
- #72 E.C. TITTE 545-174 0.789A
- #73 S. KOLESKO 556-1 0.285A
- #74 W. WEHR 434-623 0.91A
- #75 BENJAY COAL 107-1 3.5.03A
- #76 H. GRYWALSKI 552-381 0.50A
- #77 M. DEANE 615-69 0.70A
- #78 J. NEGOLFKA 602-762 0.262
- #79 E.C. TITTE 545-174 0.789A
- #80 S. KOLESKO 556-1 0.285A
- #81 W. WEHR 434-623 0.91A
- #82 BENJAY COAL 107-1 3.5.03A
- #83 H. GRYWALSKI 552-381 0.50A
- #84 M. DEANE 615-69 0.70A
- #85 J. NEGOLFKA 602-762 0.262
- #86 E.C. TITTE 545-174 0.789A
- #87 S. KOLESKO 556-1 0.285A
- #88 W. WEHR 434-623 0.91A
- #89 BENJAY COAL 107-1 3.5.03A
- #90 H. GRYWALSKI 552-381 0.50A
- #91 M. DEANE 615-69 0.70A
- #92 J. NEGOLFKA 602-762 0.262
- #93 E.C. TITTE 545-174 0.789A
- #94 S. KOLESKO 556-1 0.285A
- #95 W. WEHR 434-623 0.91A
- #96 BENJAY COAL 107-1 3.5.03A
- #97 H. GRYWALSKI 552-381 0.50A
- #98 M. DEANE 615-69 0.70A
- #99 J. NEGOLFKA 602-762 0.262
- #100 E.C. TITTE 545-174 0.789A
- #101 S. KOLESKO 556-1 0.285A
- #102 W. WEHR 434-623 0.91A
- #103 BENJAY COAL 107-1 3.5.03A
- #104 H. GRYWALSKI 552-381 0.50A
- #105 M. DEANE 615-69 0.70A
- #106 J. NEGOLFKA 602-762 0.262
- #107 E.C. TITTE 545-174 0.789A
- #108 S. KOLESKO 556-1 0.285A
- #109 W. WEHR 434-623 0.91A
- #110 BENJAY COAL 107-1 3.5.03A
- #111 H. GRYWALSKI 552-381 0.50A
- #112 M. DEANE 615-69 0.70A
- #113 J. NEGOLFKA 602-762 0.262
- #114 E.C. TITTE 545-174 0.789A
- #115 S. KOLESKO 556-1 0.285A
- #116 W. WEHR 434-623 0.91A
- #117 BENJAY COAL 107-1 3.5.03A
- #118 H. GRYWALSKI 552-381 0.50A
- #119 M. DEANE 615-69 0.70A
- #120 J. NEGOLFKA 602-762 0.262
- #121 E.C. TITTE 545-174 0.789A
- #122 S. KOLESKO 556-1 0.285A
- #123 W. WEHR 434-623 0.91A
- #124 BENJAY COAL 107-1 3.5.03A
- #125 H. GRYWALSKI 552-381 0.50A
- #126 M. DEANE 615-69 0.70A
- #127 J. NEGOLFKA 602-762 0.262
- #128 E.C. TITTE 545-174 0.789A
- #129 S. KOLESKO 556-1 0.285A
- #130 W. WEHR 434-623 0.91A
- #131 BENJAY COAL 107-1 3.5.03A
- #132 H. GRYWALSKI 552-381 0.50A
- #133 M. DEANE 615-69 0.70A
- #134 J. NEGOLFKA 602-762 0.262
- #135 E.C. TITTE 545-174 0.789A
- #136 S. KOLESKO 556-1 0.285A
- #137 W. WEHR 434-623 0.91A
- #138 BENJAY COAL 107-1 3.5.03A
- #139 H. GRYWALSKI 552-381 0.50A
- #140 M. DEANE 615-69 0.70A
- #141 J. NEGOLFKA 602-762 0.262
- #142 E.C. TITTE 545-174 0.789A
- #143 S. KOLESKO 556-1 0.285A
- #144 W. WEHR 434-623 0.91A
- #145 BENJAY COAL 107-1 3.5.03A
- #146 H. GRYWALSKI 552-381 0.50A
- #147 M. DEANE 615-69 0.70A
- #148 J. NEGOLFKA 602-762 0.262
- #149 E.C. TITTE 545-174 0.789A
- #150 S. KOLESKO 556-1 0.285A
- #151 W. WEHR 434-623 0.91A
- #152 BENJAY COAL 107-1 3.5.03A
- #153 H. GRYWALSKI 552-381 0.50A
- #154 M. DEANE 615-69 0.70A
- #155 J. NEGOLFKA 602-762 0.262
- #156 E.C. TITTE 545-174 0.789A
- #157 S. KOLESKO 556-1 0.285A
- #158 W. WEHR 434-623 0.91A
- #159 BENJAY COAL 107-1 3.5.03A
- #160 H. GRYWALSKI 552-381 0.50A
- #161 M. DEANE 615-69 0.70A
- #162 J. NEGOLFKA 602-762 0.262
- #163 E.C. TITTE 545-174 0.789A
- #164 S. KOLESKO 556-1 0.285A
- #165 W. WEHR 434-623 0.91A
- #166 BENJAY COAL 107-1 3.5.03A
- #167 H. GRYWALSKI 552-381 0.50A
- #168 M. DEANE 615-69 0.70A
- #169 J. NEGOLFKA 602-762 0.262
- #170 E.C. TITTE 545-174 0.789A
- #171 S. KOLESKO 556-1 0.285A
- #172 W. WEHR 434-623 0.91A
- #173 BENJAY COAL 107-1 3.5.03A
- #174 H. GRYWALSKI 552-381 0.50A
- #175 M. DEANE 615-69 0.70A
- #176 J. NEGOLFKA 602-762 0.262
- #177 E.C. TITTE 545-174 0.789A
- #178 S. KOLESKO 556-1 0.285A
- #179 W. WEHR 434-623 0.91A
- #180 BENJAY COAL 107-1 3.5.03A
- #181 H. GRYWALSKI 552-381 0.50A
- #182 M. DEANE 615-69 0.70A
- #183 J. NEGOLFKA 602-762 0.262
- #184 E.C. TITTE 545-174 0.789A
- #185 S. KOLESKO 556-1 0.285A
- #186 W. WEHR 434-623 0.91A
- #187 BENJAY COAL 107-1 3.5.03A
- #188 H. GRYWALSKI 552-381 0.50A
- #189 M. DEANE 615-69 0.70A
- #190 J. NEGOLFKA 602-762 0.262
- #191 E.C. TITTE 545-174 0.789A
- #192 S. KOLESKO 556-1 0.285A
- #193 W. WEHR 434-623 0.91A
- #194 BENJAY COAL 107-1 3.5.03A
- #195 H. GRYWALSKI 552-381 0.50A
- #196 M. DEANE 615-69 0.70A
- #197 J. NEGOLFKA 602-762 0.262
- #198 E.C. TITTE 545-174 0.789A
- #199 S. KOLESKO 556-1 0.285A
- #200 W. WEHR 434-623 0.91A

MT. PLEASANT
SECTION 24, T.7R.3.
SCALE: 1"=200'